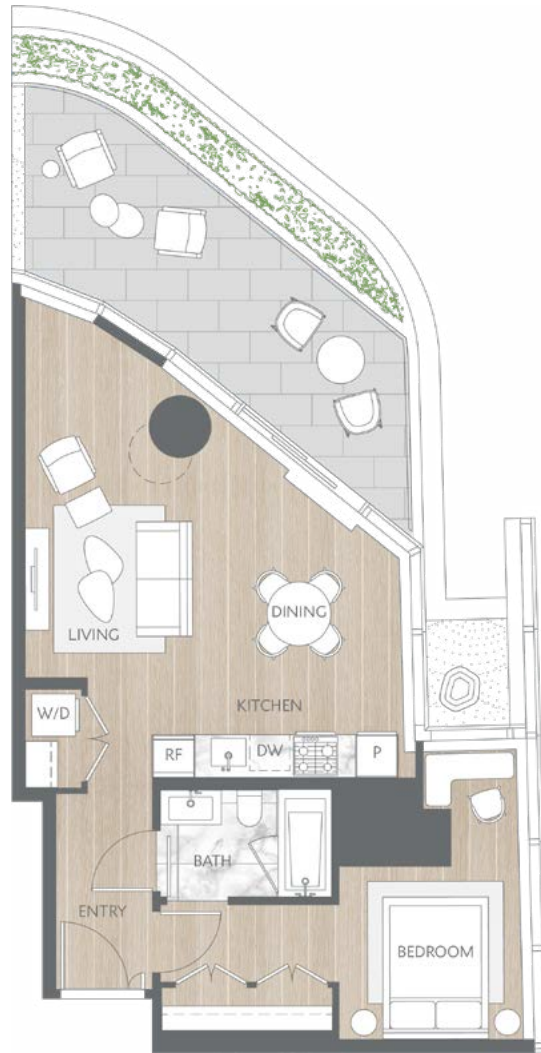
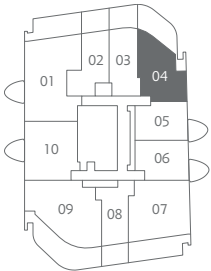


# Home 1504

Contemporary Inspired Living  
One Bedroom  
Total Living: 837 ft<sup>2</sup>



WEST 41<sup>ST</sup> AVENUE



Dimensions, sizes, specifications, layouts and materials are approximate and provided for information purposes only and are not represented as being the actual final areas and dimensions. Prospective purchasers are advised that interior square footage is combined with balcony square footage and included in total advertised square footage of the homes. Exterior walls and glazing, balcony configurations, fascia, guard-rails, screens and façade panel locations are approximate and provided for information purposes only, and will vary in area, type, specifications, and extent depending on the home. The locations shown are not represented as being the final locations of these items. All of the foregoing (including without limitation the dimensions and layout) are subject to change in the developer's sole discretion, without compensation or notice. Please ask sales representative for details. E. & O.E.



westbank