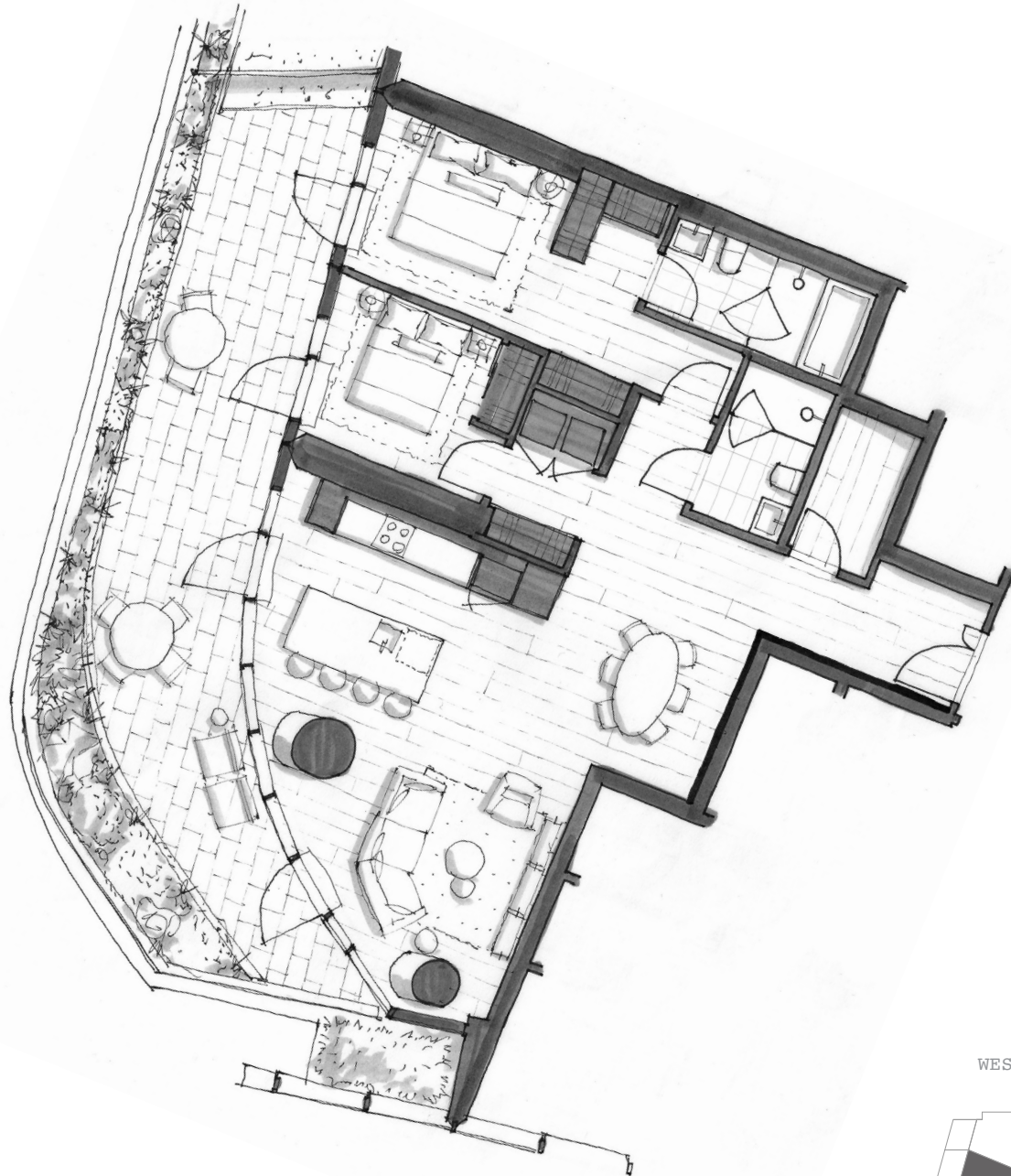




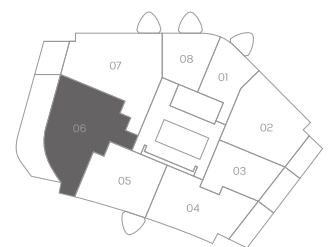
OAKRIDGE

DIMORA 1906

Two Bedroom
1,851 Total Square Feet
Floor 19



WEST 41ST AVENUE



FLOOR 19



PIERO LISSONI
× **OAKRIDGE**

Dimensions, sizes, specifications, renderings, layouts and materials are approximate only and subject to change without notice. Interior square footage is combined with balcony square footage and included in total advertised square footage of the homes. Exterior walls and glazing, balcony configurations, fascia, guardrails, screens and façade panel locations are approximate and vary in area and extent depending on the home. Please ask sales representative for details. E.&O.E.



westbank²⁵